



# ACTIVITY REPORT

DECEMBER 2018

Happy Makar Sankranti

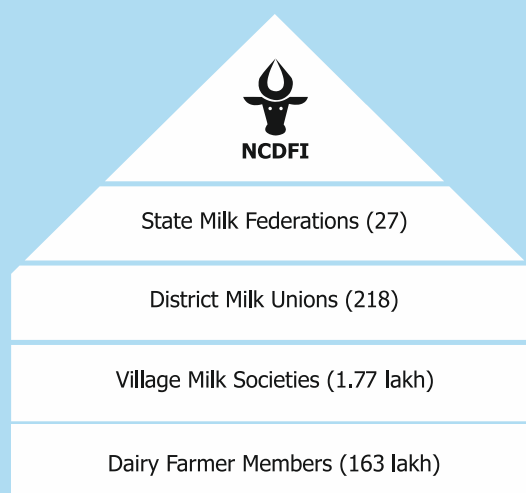
# About us

National Cooperative Dairy Federation of India Limited (NCDFI), established in 1970, is an apex body of dairy/oil cooperatives. Its members include federal dairy cooperatives of states / union territories and National Dairy Development Board (NDDB) as its institutional member.

The primary objective of NCDFI is to facilitate the working of dairy cooperatives through coordination, networking and advocacy.

Major activities of the NCDFI are: Coordination of milk and milk product supplies to Defence Services; Providing Online Marketplace for Dairy Industry; and working for genetic improvement of cattle.

Total business transacted by the NCDFI during 2017-18 was ₹ 2,057 crores.



Adoption of technology and its application to ensure better returns to dairy cooperatives and in turn to milk producers has been the primary focus of NCDFI. One such initiative is NCDFI eMarket which was launched on June 10, 2015.

NCDFI eMarket facilitates the bulk sales of dairy commodities and procurement of required Raw/Packing/Chemicals for Dairy/Cattlefeed plants. This platform ensures transparent, fair, economic and faster dealings for all the members.

NCDEX eMarkets Ltd (NeML), provides technical & Business Development support to NCDFI eMarket.



## NCDFI eMarket Offices

### Andhra Pradesh

Kurnool  
Vijayawada  
Vizag

### Bihar

Patna

### Delhi

### Gujarat

Anand  
Ahmedabad

### Haryana

Chandigarh

### Jharkhand

Ranchi

### Karnataka

Bengaluru  
Mysore

### Kerala

Cochin  
Trivendrum

### Madhya Pradesh

Bhopal  
Indore

### Maharashtra

Mumbai  
Nagpur  
Pune

### Orissa

Bhubhaneshwar

### Punjab

Chandigarh  
Ludhiana

### Rajasthan

Jaipur  
Jodhpur

### Tamilnadu

Chennai  
Coimbatore

### Telangana

Hyderabad

### Uttar Pradesh

Lucknow

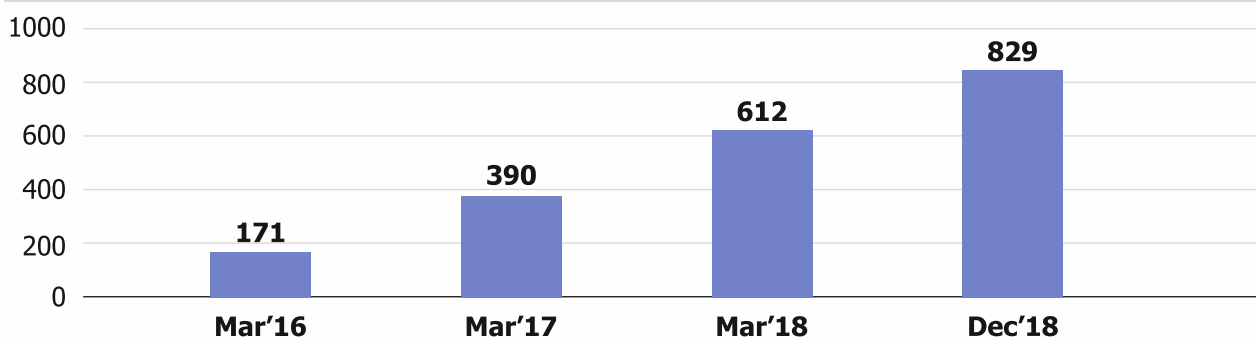
### West Bengal

Kolkata  
Siliguri

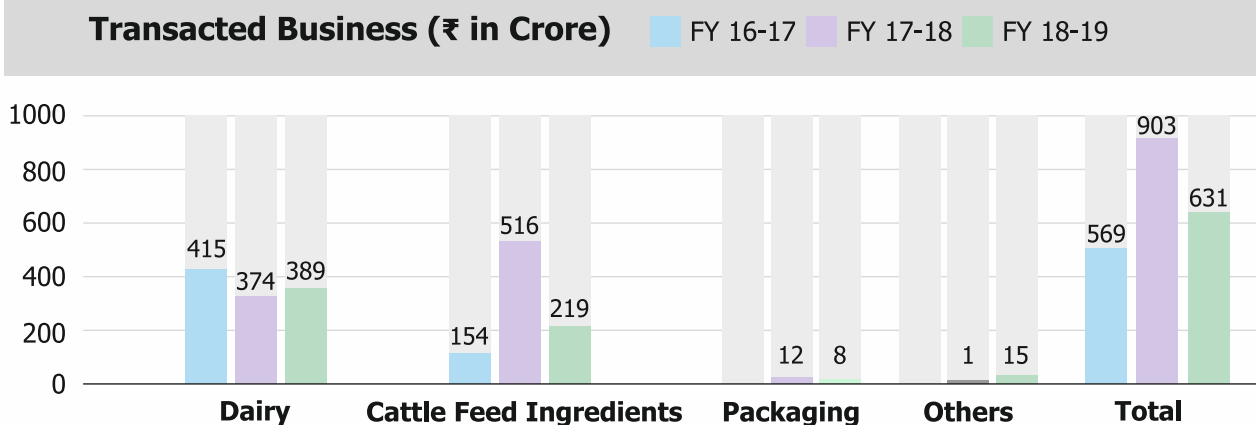
## At a Glance

Commodity	Number of Auctions		Quantity		Unit
	Concluded	Awaited	Concluded	Awaited	
<b>Dairy</b>					
Forward Auctions	20		1,880		MT
Auction Sale	9		985		MT
Reverse Auctions	1	1	25	300	MT
<b>Packaging</b>					
Reverse Auctions	1		1,00,000		Nos
		1		2,000	Kgs
Group Auction		1		50,000	Nos
	2		31,000		Kgs
<b>Cattle Feed Ingredients</b>					
Reverse Auctions	49	10	29,803	71,303	MT
<b>Sugar</b>					
Reverse Auctions	5		355		MT
<b>Scrap</b>					
Forward Auctions	1		1,00,000		Nos
		5		9,25,800	Kgs
		6		1,61,050	Nos

### Members of NCDFI eMarket



### Transacted Business (₹ in Crore)



---

# Product List

---

## Dairy Products



Butter	Milk
Cheese	SMP
Ghee	WMP

## Cattle Feed Ingredients

Active Dried Yeast	Mustard Oil Cake
Calcite Powder	Manganese Sulphate
Calcium Carbonate	De Oiled Groundnut Cake/Extraction
Chromium Chelate	De Oiled Rapeseed Cake/Extraction
Cobalt Sulphate	De Oiled Soya Bean Cake/Extraction
Coffee Husk Powder	De Oiled Sun Flower Cake/Extraction
Copper Sulphate	Decorticated De Oiled Cottonseed Extraction
Copra Cake Expeller	Distillers Dried Grain Solution (DDGS – Maize)
Cottonseed Extraction <b>New</b>	Distillers Dried Grain Solution (DDGS – RICE)
De Oiled Coconut Cake	Mineral Mixture (without salt)
De Oiled Cottonseed Cake	Mustard Cake Expeller
De Oiled Gingelly Cake	N.B. Sac
De Oiled Mustard Cake	Potassium Iodide
De Oiled Shea Cake	Rapeseed Extraction <b>New</b>
Di Calcium Phosphate	Rice Polish/Bran
DORB	S A L Doc
Groundnut Cake <b>New</b>	Salt (Common/Lye Crystal White/Iodized)
Guar Korma	Shea Nut Cake
Hi Intensity Artificial Sweetener	Sun Flower Meal
Horse Gram (Kulthi)	Tapioca Tippi Flour
Jowar	Trace Minerals (Organic / Non Chelated Pack)
Kemin Maxim Dry	Urea (Technical Grade)
Lacto Vanilla	Vitamin AD 3
Magnesium Oxide	Vitamin ADE With Trace Minerals
Maize	Wheat Bran
	Zinc Sulphate

## Sugar

M-30      S-31  
M-31      Pharma Grade Sugar  
S-30



## Edible Oils

Coconut Oil	RBD Super Olein Oil
Crude Palm Oil	RBD Palmolein Oil
Gingelly Oil	Rice Bran Deepam Oil
Groundnut Oil	Sunflower Oil
Crude Palm Kernel Oil	



## Packaging Materials

Beri Caps	Cups, Glasses, Buckets, Foils, Corks, etc.
Bottles (Water/SFM)	Films (Milk/Water/Ghee/Curd/Butter Milk/Edible Oil)
Corrugated Boxes	HDPE Pallets
Crates	Heat Shrink Sleeves
GI Packing Clips	Pet Bottles for Edible oil Packing
HDPE Jars	Poly Poplin Bags [ (28"x42"),(22"x30") ]
	Poly Propylene Sacks (25 Kg / 50 Kg)
	P.P. Covers
	Printed Polyliner
	Printed Polypropylene Sacks (20 Kg)
	Rolls (Bopp Tape/Box Strapping/Parchment paper)
	Tins



## Chemicals

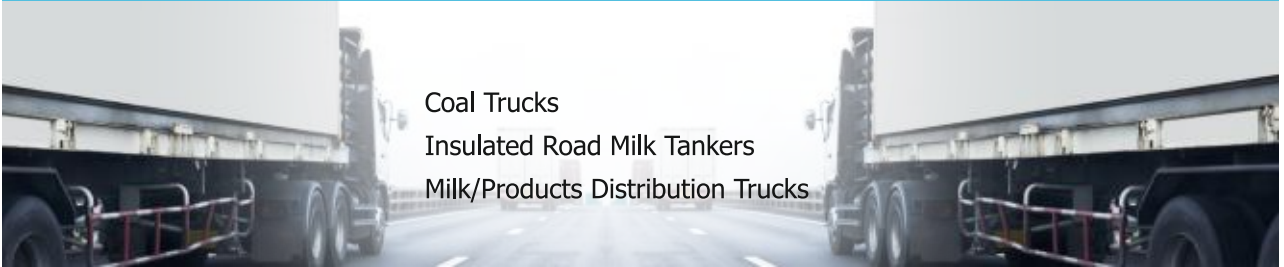
Anzyme (Enzymes)  
Bleaching Powder  
Caustic Soda Flakes  
Caustic Soda Lye  
Idophor  
Lysine (Protected)

Methionine (Protected)  
Nitric Acid  
Nuvan  
Soap Oil  
Washing Soda



## Transport

Coal Trucks  
Insulated Road Milk Tankers  
Milk/Products Distribution Trucks



## Scrap

Cast Iron  
Corrugated Boxes **New**  
Damaged Poly Film **New**  
Empty Spool **New**  
Gunny Bags  
Metal Steel  
PP Bags  
Wooden Scrap **New**



## Upcoming Products

Fodder Seeds

## Transacted Volumes

Product	Quantity (MT)	
	2018-19*	2017-18
<b>Dairy</b>		
SMP	20,947	14,743
Butter	3,608	3,115
WMP	70	2,005
Ghee	15	
<b>Cattle Feed Ingredients</b>		
DORB	78,230	87,622
Rice Polish/Bran	13,069	14,150
Maize	12,140	2,49,672
De Oiled Rapeseed Cake/Extraction	11,120	3,500
De Oiled Cottonseed Cake	7,160	1,250
De Oiled Coconut Cake	3,030	500
Decorticated De Oiled Cottonseed Extraction	2,100	1,000
De Oiled Mustard Cake	2,070	
Calcite Powder	2,017	500
Distillers Dried Grain Solution (Rice)	2,010	
De Oiled Sunflower Cake/Extraction	1,440	800
De Oiled Soya Bean Cake/Extraction	1,310	700
Di Calcium Phosphate	1,200	
<b>Sugar</b>		
M-31	1,580	
S-31	798	
Pharma Grade	120	
M-30	105	15
S-30	39	
<b>Edible Oils</b>		
Crude Palm Oil	450	
Rice Bran Deepam Oil	20	

\* Upto December 31, 2018

# Dairy

# Concluded Trades

Brand	Quantity Sold (MT) (December - 2018)				Ex-Dairy Offered Price (₹/Kg) (27-Dec-2018)		
	SMP	Butter	WMP	Ghee	SMP	Butter	Ghee
	1,530				185		
	600						
	280	120			210	225	
	170					225	
	50	100				220	
			25				
				15		235	300
						220	
						230	
						*315	
					*245	240	

\* Buffalo Milk



# Cattle Feed Ingredients Concluded Trades

Details of Trades				
State	Place	Qty (MT)	FOR Rate (₹/kg)	Trade Date
<b>Maize</b>				
Andhra Pradesh	Anakapalli	180	21.38	28-Dec-18
Karnataka	Dharwad	13,000	*19.90	31-Dec-18
	Gubbi	10,000	*20.85	
	Hassan	15,000	*20.79	
	Rajanukunte	15,000	*20.97	
	Shikaripura	15,000	*20.25	
Kerala	Malampuzha	300	21.79	11-Dec-18
	Pattanakad	500	20.00	04-Dec-18
		300	21.49	24-Dec-18
Tamil Nadu	Erode	150	20.63	20-Dec-18
		150	21.19	21-Dec-18
Telangana	Gadwal	600	*22.50	28-Dec-18
Uttar Pradesh	Raebareli	20	18.80	12-Dec-18
<b>Rice Polish/Bran</b>				
Andhra Pradesh	Anakapalli	50	18.38	28-Dec-18
Karnataka	Hassan	450	18.69	21-Dec-18
	Dharwad	500	16.27	13-Dec-18
	Gubbi	200	18.20	
	Hassan	800	18.93	
Tamil Nadu	Erode	500	22.60	
Uttar Pradesh	Raebareli	10	15.00	27-Dec-18
West Bengal	Berhampore	60	11.79	06-Dec-18
<b>DORB</b>				
Andhra Pradesh	Anakapalli	750	11.34	28-Dec-18
Himachal Pradesh	Bhoranj	1,000	10.78	11-Dec-18
	Dharwad	2,000	11.46	21-Dec-18
Karnataka	Gubbi	1,300	12.45	
	Hassan	4,000	13.35	
	Rajanukunte	1,500	12.69	
	Dharwad	1,000	11.40	
	Gubbi	500	12.49	
	Hassan	3,000	12.93	
	Rajanukunte	1,500	12.78	

# Cattle Feed Ingredients Concluded Trades

Details of Trades				
State	Place	Qty (MT)	FOR Rate (₹/kg)	Trade Date
Maharashtra	Warananagar	400	12.96	05-Dec-18
Tamil Nadu	Erode	1,500	14.43	11-Dec-18
Telangana	Gadwal	2,500	*11.03	28-Dec-18
Uttar Pradesh	Raebareli	10	12.00	12-Dec-18
West Bengal	Berhampore	300	10.29	06-Dec-18
<b>De Oiled Cottonseed Cake</b>				
Andhra Pradesh	Anakapalli	100	22.37	28-Dec-18
<b>Technical Grade Urea</b>				
Kerala	Malampuzha	42	39.30	26-Dec-18
	Pattanakad	21	39.50	
Tamil Nadu	Erode	50	37.17	04-Dec-18
<b>De Oiled Soya Bean Cake</b>				
Uttar Pradesh	Raebareli	10	32.25	12-Dec-18
<b>De Oiled Rapeseed Extraction/Cake</b>				
Andhra Pradesh	Anakapalli	100	20.95	28-Dec-18
Karnataka	Dharwad	500	18.86	21-Dec-18
	Gubbi	450	20.48	
	Hassan	2,500	20.56	
	Rajanukunte	300	21.80	
	Shikaripura	800	20.14	
Tamil Nadu	Erode	300	22.47	04-Dec-18
<b>De Oiled Sunflower Extraction</b>				
Tamil Nadu	Erode	300	27.54	27-Dec-18
<b>De Oiled Mustard Cake</b>				
Uttar Pradesh	Raebareli	10	22.00	27-Dec-18
<b>Decorticated Deoiled Cottonseed Extraction</b>				
Tamil Nadu	Erode	500	24.65	04-Dec-18
<b>Wheat Bran</b>				
Uttar Pradesh	Raebareli	10	22.00	12-Dec-18
<b>Common Salt</b>				
Andhra Pradesh	Anakapalli	30	02.47	28-Dec-18
Tamil Nadu	Erode	150	02.60	04-Dec-18

\* Decision of Buyer awaited

## Cattle Feed Ingredients Concluded Trades

<b>Calcite Powder</b>					
Tamil Nadu	Erode		500	04.00	27-Dec-18
			200	38.90	11-Dec-18
<b>Cottonseed Extraction</b>					
Kerala	Pattanakad		200	*23.88	31-Dec-18
<b>Chelated Mineral Mixture</b>					
Uttar Pradesh	Raebareli		1.5	*88.00	31-Dec-18
<b>Non – Chelated Mineral Mixture</b>					
Uttar Pradesh	Raebareli		1	*58.00	31-Dec-18

Note: \* Decision of Buyer Awaited

## Scrap Concluded Trades

<b>Details of Trades</b>					
State	Place	Qty	Unit	Ex-CFP Rate (₹/Unit)	Trade Date
<b>Used Gunny Bags</b>					
Tamil Nadu	Erode	1,00,000	Nos	12.10	20-Dec-18
<b>PP Bags</b>					
Gujarat	Kanjari	40,000	Nos	*01.40	27-Dec-18
	Kapdivav	77,500			
<b>Used Gunny Bags (Chokdi 1)</b>					
Gujarat	Kanjari	4,85,000	Kgs	*08.31	27-Dec-18
	Kapdivav	4,36,820		*08.50	
<b>Used Gunny Bags (Chokdi 2)</b>					
Gujarat	Kanjari	2,000	Kgs	*05.10	27-Dec-18
<b>Kantan</b>					
Gujarat	Kanjari	750	Kgs	*19.11	27-Dec-18
	Kapdivav	1,230		*18.80	
<b>Small Bags</b>					
Gujarat	Kanjari	12,000	Nos	*10.85	31-Dec-18
	Kapdivav	27,050		*11.15	
<b>Miscellaneous Bags</b>					
Gujarat	Kanjari	2,000	Nos	*32.25	31-Dec-18
	Kapdivav	2,500		*31.00	

Note: \* Decision of Buyer Awaited

## Packaging Materials

## Concluded Trades

Details of Trades					
State	Place	Qty	Unit	FOR Rate (₹/Unit)	Trade Date
<b>Milk Polythene Film</b>					
Himachal Pradesh	Shimla	6,000	Kgs	156.00	04-Dec-18
	Mandi	8,000	Kgs	156.00	
	Kangra	8,000	Kgs	156.00	
	Nalagarh	4,000	Kgs	156.00	
<b>Ghee Polythene Film</b>					
Himachal Pradesh	Shimla	2,500	Kgs	205.00	04-Dec-18
	Mandi	2,500	Kgs	205.00	
<b>Printed Polypropylene Bags (50 Kg Capacity) for the packing of Manure Mixtures</b>					
Tamil Nadu	Trichy	40,000	Nos		15-Dec-18
	Madurai	30,000	Nos	26.00	
	Vellore	30,000	Nos		
<b>500 gms Carry Bags</b>					
Telangana	Hyderabad	25,000	Nos	*01.42	24-Dec-18
<b>2 Kg Carry Bags</b>					
Telangana	Hyderabad	25,000	Nos	*03.39	24-Dec-18
<b>Box Strapping Rolls</b>					
Telangana	Hyderabad	2,000	Kgs	*94.48	26-Dec-18

Note: \* Decision of Buyer Awaited

## Sugar

## Concluded Trades

Details of Trades				
State	Place	Qty (MT)	FOR Rate (₹/kg)	Trade Date
<b>M-31</b>				
Bihar	Rohtas	20	34.39	01-Dec-18
	Barauni	200	34.31	21-Dec-18
	Samastipur	60	34.17	27-Dec-18
Chhattisgarh	Kharora	50	34.09	28-Dec-18
<b>M-30</b>				
Jharkhand	Ranchi	25	33.40	27-Dec-18

## Newly Introduced



## Buyers



Marketing Federation  
**The Tamilnadu Cooperative  
Marketing Federation**

Category  
**Packaging**

Plants  
**Tiruvarur, Trichy,  
Madurai & Vellore**



Cattle Feed Plant  
**Vishal Patliputra Dudh  
Utpadak Sahakari Sangh Ltd**

Category  
**Cattle Feed  
Ingredients**

Plant  
**Jagdeopath**

Milk Union  
**Mithila Dugdh Utpadak  
Sahkari Sangh Ltd**

Category  
**Sugar**

Plant  
**Samastipur**



Milk Union  
**The Krishna District  
Milk Producers Mutually  
Aided Cooperative Union Ltd**

Category  
**Dairy  
Products**

Plant  
**Vijayawada**



Cattle Feed Plant  
**Sabarkantha District  
Cooperative Milk Producers'  
Union Limited**

Category  
**Cattle Feed  
Ingredients**

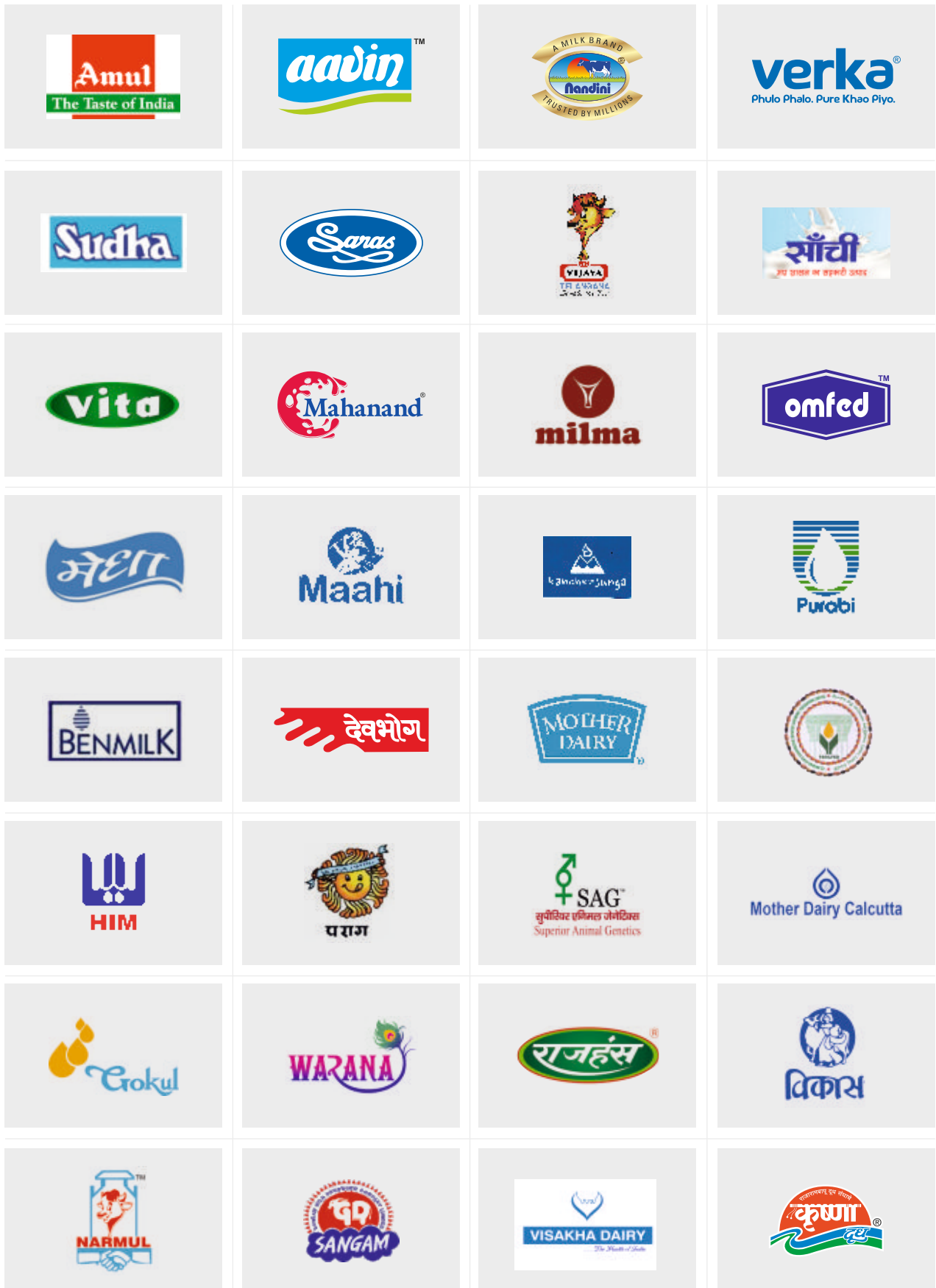
Plant  
**Hajipur**

# NCDFI eMarket Buyer - Seller (KMF) Meet

At Bengaluru, December 03, 2018



# Associated Brands





TRANSPORT



LAUNCHED

12 · 12 · 2018



Telangana State Dairy  
Development Cooperative  
Federation Limited

chitaara.com | +91 9924461171



**National Cooperative Dairy Federation of India Ltd.**  
NDDB D-Lab Campus, Post Box 79, Anand 388 001  
☎ +91-2692-288388 ☎ 288399 ✉ info@NCDFIeMarket.com  
🌐 www.NCDFIeMarket.com | www.NCDFI.coop